

280 mm

70 mm

2.5 mm



Preparation:

1. A scoop is enclosed to help you measure accurately. Do not force or pack the powder into the scoop.
 2. Place one level scoopful of Cholestyramine for Oral Suspension USP, Light in a glass or cup.
 3. Add at least 2 to 6 ounces of water or the noncarbonated beverage of your choice.
 4. Stir to a uniform consistency and drink.
- Always mix Cholestyramine for Oral Suspension USP, Light with water, or the noncarbonated beverage of your choice, or other highly fluid foods or fruits before using.

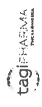
NDC 51224-009-10

Rx Only

Cholestyramine for Oral Suspension USP, Light Powder

4 grams cholestyramine resin USP, per scoopful*

Orange Flavor
42 Measured Doses
Contents: 201.6 g (168 g cholestyramine resin USP)



Contains the artificial sweetener Aspartame.

WARNINGS PHENYLKETONURICS:
CONTAINS PHENYLALANINE 16.8 mg per 4.8 g DOSE.

This package is not child-resistant.

KEEP OUT OF THE REACH OF CHILDREN.

Always replace plastic lid after using.

Store at 20°C to 25°C (68° to 77°F) [see USP Controlled Room Temperature].

Usual Dosage: See accompanying literature.
*Each level scoopful (4.8 grams) of Cholestyramine for Oral Suspension USP, Light contains 4 grams cholestyramine resin USP.

This scoop is not interchangeable with scoops from other products.

Manufactured by Laboratorios Rubió, S.A. Industria, 29. Pol. Ind. Comte de Sert 08755-Castellbisbal (Barcelona) Spain

Manufactured for TAGI Pharma, Inc. South Beloit, IL 61080

Rev. 11/20
36840510 0120



2.5 mm

40 mm

225 mm

15 mm



Etichete • Tehnica etichetării
Labels • Labelling technology

Customer/Client: **Laboratorios Rubio Espania**

Date/Date: **22_12_2020**

Label code/Cod eticheta: **43_16_12_20_38FW**

Diecut/Stantă: **... (70 / 280 mm)**

Designer: **george**

Material: **baza pt. Fix-a-Form**

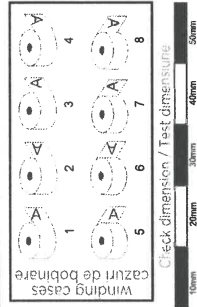
Printing type: **Offset + Flexo**

Varnish/Lăcuire: glossy / mat

Offset: full / partial

Obs.: **P520C K** / **K verso**

Flexo: **P520C K**



Inovalabel Srl • România • Parcul Industrial Microclava • Jud. Iași
Bd. Iulien-707307 • Str. Tudor Vladimirescu nr.1
Tel. +40 (0) 232 244 000 Fax +40 (0) 232 243 000
www.inovalabel.ro • www.inovalabel.com

Date, signature, date, stamping
Data, semnătură, dată, ștampilă
BT
TUNE UP PAR
APPROVED

AN-BA-Approved
12/23/20
12-23-20
12/23/20

IMPORTANT: Please check the graphics and the text spelling on each project and clearly highlight any nonconformities for applying the necessary corrections before printing.
Following approval, the correctness of the project becomes customer's responsibility.
Vă rugăm să verificați cu atenție proiectul atât din punct de vedere al graficii, cit. și ortografic.
Evidențiați clar eventualele neconformități pentru a putea fi remediate.
Responsabilitatea corectitudinii proiectului aprobat revine beneficiarului.



Preparation:

1. A scoop is enclosed to help you measure accurately. Do not force or pack the powder into the scoop.
2. Place one level scoopful of Cholestyramine for Oral Suspension USP, Light in a glass or cup.
3. Add at least 2 to 6 ounces of water or the noncarbonated beverage of your choice.
4. Stir to a uniform consistency and drink.

Always mix Cholestyramine for Oral Suspension USP, Light with water, or the noncarbonated beverage of your choice, or other highly fluid foods or fruits before using.

Orange Flavor
42 Measured Doses
Contents: 201.6 g
(168 g cholestyramine resin USP)

4 grams cholestyramine resin USP, per scoopful*

Always replace plastic lid after using.

KEEP OUT OF THE REACH OF CHILDREN.

Always replace plastic lid after using.

Store at 20°C to 25°C (68° to 77°F) [see USP Controlled Room Temperature].

NDC 51224-009-10 Rx Only
Cholestyramine for Oral Suspension USP, Light Powder

Contains the artificial sweetener Aspartame.

WARNINGS PHENYLKETONURICS: CONTAINS PHENYLALANINE 16.8 mg per 4.8 g DOSE.

This package is not child-resistant.

Manufactured by Laboratorios Rubió, S.A. Industria, 29, Pol. Ind. Comte de Sert 08755-Castellbisbal (Barcelona) Spain

Manufactured for TAGI Pharma, Inc. South Beloit, IL 61080

Rev. 11/20
 36840510 0120

Usual Dosage: See accompanying literature.
 *Each level scoopful (4.8 grams) of Cholestyramine for Oral Suspension USP, Light contains 4 grams cholestyramine resin USP.

This scoop is not interchangeable with scoops from other products.

Manufactured for TAGI Pharma, Inc. South Beloit, IL 61080

Rev. 11/20
 36840510 0120

front page
 page 1

- cut die/perforation
- ⋯ text area/artwork
- bleed

INSTRUCTIONS

M. Bell 12-23-20
 H. Miller 12-23-20

220 mm

70 mm

Clinical Studies

In a large, placebo-controlled, multi-clinic study, LRC-CPPT¹, hypercholesterolemic subjects treated with cholestyramine resin had mean reduction in total and low-density lipoprotein cholesterol (LDL-C) which exceeded those for diet and placebo treatment by 7.2% and 10.4%, respectively. Over the seven-year study period the cholestyramine resin group experienced a 19% reduction (relative to the incidence in the placebo group) in the combined rate of coronary heart disease death plus non-fatal myocardial infarction (cumulative incidence of 7% cholestyramine resin and 8.6% placebo). The subjects included in the study were men aged 35 to 59 with serum cholesterol levels above 265 mg/dL and no previous history of heart disease. It is not clear to what extent these findings can be extrapolated to females and other segments of the hypercholesterolemic population (see also **PRECAUTIONS, Carcinogenesis, Mutagenesis, Impairment of Fertility**).

Two controlled clinical trials have examined the effects of cholestyramine monotherapy upon coronary atherosclerotic lesions using coronary arteriography. In the NHLBI Type II Coronary Intervention Trial², 116 patients (80% male) with coronary artery disease (CAD) documented by arteriography were randomized to cholestyramine resin or placebo for five years of treatment. Final study arteriography revealed progression of coronary artery disease in 49% of placebo patients compared to 32% of the cholestyramine resin group (p<0.05).

In the St. Thomas Atherosclerosis Regression Study (STARS)³, 90 hypercholesterolemic men with CAD were randomized to three blinded treatments: usual care, lipid-lowering diet and lipid-lowering diet plus cholestyramine resin. After 36 months, follow-up coronary arteriography revealed progression of disease in 46% of usual care patients, 15% of patients on lipid-lowering diet and 12% of those receiving diet plus cholestyramine resin (p<0.02). The mean absolute width of coronary segments decreased in the usual care group, increased slightly (0.003 mm) in the diet group and increased by 0.103 mm in the diet plus cholestyramine group (p<0.05). Thus in these randomized controlled clinical trials using coronary arteriography, cholestyramine resin monotherapy has been demonstrated to slow progression^{2,3} and promote regression³ of atherosclerotic lesions in the coronary arteries of patients with coronary artery disease.

page 3

- cut die/perforation
- - - text limit
- bleed
- adhesive

TAG-Approvals

MAR 12-23-20
MAR 12/23/20

220 mm

The effect of intensive lipid-lowering therapy on coronary atherosclerosis has been assessed by arteriography in hyperlipidemic patients. In these randomized, controlled clinical trials, patients were treated for two to four years by either conventional methods (diet, placebo or in some cases low dose resin) or intensive combination therapy using diet plus colestipol (an anion exchange resin with a mechanism of action and an effect similar on serum lipids to that of cholestyramine for oral suspension USP, light) plus either nicotinic acid or lovastatin. When compared to conventional measures, intensive lipid-lowering combination therapy significantly reduced the frequency of progression and increased the frequency of regression of coronary atherosclerotic lesions in patients with or at risk for coronary artery disease.

INDICATIONS AND USAGE

1) Cholestyramine for oral suspension USP, light is indicated as adjunctive therapy to diet for the reduction of elevated serum cholesterol in patients with primary hypercholesterolemia (elevated low density lipoprotein [LDL] cholesterol) who do not respond adequately to diet. Cholestyramine for oral suspension USP, light may be useful to lower LDL cholesterol in patients who also have hypertriglyceridemia, but it is not indicated where hypertriglyceridemia is the abnormality of most concern.

Therapy with lipid-altering agents should be a component of multiple risk factor intervention in those individuals at significantly increased risk for atherosclerotic vascular disease due to hypercholesterolemia. Treatment should begin and continue with dietary therapy specific for the type of hyperlipoproteinemia determined prior to initiation of drug therapy. Excess body weight may be an important factor and caloric restriction for weight normalization should be addressed prior to drug therapy in the overweight.

Prior to initiating therapy with cholestyramine resin, secondary causes of hypercholesterolemia (e.g., poorly controlled diabetes mellitus, hypothyroidism, nephrotic syndrome, dysproteinemias, obstructive liver disease, other drug therapy, alcoholism), should be excluded and a lipid profile performed to assess Total cholesterol, HDL-C and triglycerides (TG). For individuals with TG less than 400 mg/dL (<4.5 mmol/L), LDL-C can be estimated using the following equation:

$$\text{LDL-C} = \text{Total cholesterol} - ((\text{TG}/5) + \text{HDL-C})$$

For TG levels > 400 mg/dL, this equation is less accurate and LDL-C concentrations should be determined by ultracentrifugation. In hypertriglyceridemic patients, LDL-C may be low or normal despite elevated Total-C. In such cases cholestyramine resin may not be indicated.

page 4

cut die/perforation

text limit

bleed

adhesive

THGCM parents

M. Bell 12-23-20

M. Bell 12/23/20

220 mm

70 mm

Serum cholesterol and triglyceride levels should be determined periodically based on NCEP guidelines to confirm initial and adequate long-term response. A favorable trend in cholesterol reduction should occur during the first month of cholestyramine resin therapy. The therapy should be continued to sustain cholesterol reduction. If adequate cholesterol reduction is not attained, increasing the dosage of cholestyramine resin or adding other lipid-lowering agents in combination with cholestyramine resin should be considered.

Since the goal of treatment is to lower LDL-C, the NCEP¹ recommends that LDL-C levels be used to initiate and assess treatment response. If LDL-C levels are not available, then Total-C alone may be used to monitor long-term therapy. A lipoprotein analysis (including LDL-C determination) should be carried out once a year. The NCEP¹ treatment guidelines are summarized below.

Definite Atherosclerotic Disease*	Two or More Other Risk Factors †	LDL-Cholesterol mg/dL (mmol/L)	
		Initiation Level	Goal
No	No	≥130 (≥4.9)	<160 (<4.1)
No	Yes	≥160 (≥4.1)	<130 (<3.4)
Yes	Yes or No	≥130 (≥4.1)	≤100 (≤2.6)

* Coronary heart disease or peripheral vascular disease (including symptomatic carotid artery disease).

† Other risk factors for coronary heart disease (CHD) include: age (males ≥45 years; females: ≥ 55 years or premature menopause without estrogen replacement therapy); family history of premature CHD; current cigarette smoking; hypertension; confirmed HDL-C <35 mg/dL (<0.91 mmol/L); and diabetes mellitus. Subtract one risk factor if HDL-C is ≥60 mg/dL (≥1.6 mmol/L).

Cholestyramine resin monotherapy has been demonstrated to retard the rate of progression^{2,3} and increase the rate of regression³ of coronary atherosclerosis.

2) Cholestyramine for oral suspension USP, light is indicated for the relief of pruritus associated with partial biliary obstruction. Cholestyramine resin has been shown to have a variable effect on serum cholesterol in these patients. Patients with primary biliary cirrhosis may exhibit an elevated cholesterol as part of their disease.

page 5

TAGS Products:

- cut/die/perforation
- - - text limit
- bleed
- adhesive

Handwritten notes: *MSB*, *12-23-20*, *01/22/21 5:41 PM*

220 mm

CONTRAINDICATIONS

Cholestyramine for oral suspension USP, light is contraindicated in patients with complete biliary obstruction where bile is not secreted into the intestine and in those individuals who have shown hypersensitivity to any of its components.

WARNINGS

PHENYLKETONURICS: CHOLESTYRAMINE FOR ORAL SUSPENSION USP, LIGHT CONTAINS 16.8 mg PHENYLALANINE PER 4.8 GRAM DOSE.

PRECAUTIONS

General

Chronic use of cholestyramine resin may be associated with increased bleeding tendency due to hypoprothrombinemia associated with Vitamin K deficiency. This will usually respond promptly to parenteral Vitamin K₁ and recurrences can be prevented by oral administration of Vitamin K₁. Reduction of serum or red cell folate has been reported over long term administration of cholestyramine resin. Supplementation with folic acid should be considered in these cases.

There is a possibility that prolonged use of cholestyramine resin, since it is a chloride form of anion exchange resin, may produce hyperchloremic acidosis. This would especially be true in younger and smaller patients where the relative dosage may be higher. Caution should also be exercised in patients with renal insufficiency or volume depletion and in patients receiving concomitant spirinolactone.

Cholestyramine resin may produce or worsen preexisting constipation. The dosage should be increased gradually in patients to minimize the risk of developing fecal impaction. In patients with preexisting constipation, the starting dose should be 1 pouch or 1 scoop once daily for 5 to 7 days, increasing to twice daily with monitoring of constipation and of serum lipoproteins, at least twice, 4 to 6 weeks apart. Increased fluid intake and fiber intake should be encouraged to alleviate constipation and a stool softener may occasionally be indicated. If the initial dose is well tolerated, the dose may be increased as needed by one dose/day (at monthly intervals) with periodic monitoring of serum lipoproteins. If constipation worsens or the desired therapeutic response is not achieved at one to six doses/day, combination therapy or alternate therapy should be considered. Particular effort should be made to avoid constipation in patients with symptomatic coronary artery disease. Constipation associated with cholestyramine resin may aggravate hemorrhoids.

page 6

- cut die/perforation
- - - text limit
- bleed
- adhesive

TLNGE-VIP:prad:is

MJL 12-23-20
MNR/KUS 12-23-20

220 mm

70 mm

Information for Patients

Inform your physician if you are pregnant or plan to become pregnant or are breast-feeding. Drink plenty of fluids and mix each 4.8 gram dose of cholestyramine for oral suspension USP, light in at least 2 to 6 ounces of fluid before taking. Sipping or holding the resin suspension in the mouth for prolonged periods may lead to changes in the surface of the teeth resulting in discoloration, erosion of enamel or decay, good oral hygiene should be maintained.

Laboratory Tests

Serum cholesterol levels should be determined frequently during the first few months of therapy and periodically thereafter. Serum triglyceride levels should be measured periodically to detect whether significant changes have occurred. The LRC-CPPT showed a dose-related increase in serum triglycerides of 10.7% to 17.1% in the cholestyramine-treated group, compared with an increase of 7.9% to 11.7% in the placebo group. Based on the mean values and adjusting for the placebo group, the cholestyramine-treated group showed an increase of 5% over pre-entry levels the first year of the study and an increase of 4.3% the seventh year.

Drug Interactions

Cholestyramine resin may delay or reduce the absorption of concomitant oral medication such as phenylbutazone, warfarin, thiazide diuretics (acidic) or propranolol (basic), as well as tetracycline, penicillin G, phenobarbital, thyroid and thyroxine preparations, estrogens and progestins and digitalis. Interference with the absorption of oral phosphate supplements has been observed with another positively-charged bile acid sequestrant. Cholestyramine resin may interfere with the pharmacokinetics of drugs that undergo enterohepatic circulation. The discontinuance of cholestyramine resin could pose a hazard to health if a potentially toxic drug such as digitalis has been titrated to a maintenance level while the patient was taking cholestyramine resin. Because cholestyramine binds bile acids, cholestyramine resin may interfere with normal fat digestion and absorption and thus may prevent absorption of fat-soluble vitamins such as A, D, E and K. When cholestyramine resin is given for long periods of time, concomitant supplementation with water-miscible (or parenteral) forms of fat soluble vitamins should be considered. **SINCE CHOLESTYRAMINE RESIN MAY BIND OTHER DRUGS GIVEN CONCURRENTLY, IT IS RECOMMENDED THAT PATIENTS TAKE OTHER DRUGS AT LEAST 1 HOUR BEFORE OR 4 TO 6 HOURS AFTER CHOLESTYRAMINE RESIN (OR AT AS GREAT AN INTERVAL AS POSSIBLE) TO AVOID IMPEDING THEIR ABSORPTION.**

page 7

cut die/perforation

text limit

bleed

adhesive

TAGE APPROVALS

M. Bell 12-23-20
MINDS REPORT

220 mm

Carcinogenesis, Mutagenesis, Impairment of Fertility

In studies conducted in rats in which cholestyramine resin was used as a tool to investigate the role of various intestinal factors, such as fat, bile salts and microbial flora, in the development of intestinal tumors induced by potent carcinogens, the incidence of such tumors was observed to be greater in cholestyramine resin-treated rats than in control rats.

The relevance of this laboratory observation from studies in rats to the clinical use of cholestyramine resin is not known. In the LRC-CPPT study referred to above, the total incidence of fatal and nonfatal neoplasms was similar in both treatment groups. When the many different categories of tumors are examined, various alimentary system cancers were somewhat more prevalent in the cholestyramine group. The small numbers and the multiple categories prevent conclusions from being drawn.

However, in view of the fact that cholestyramine resin is confined to the GI tract and not absorbed and in light of the animal experiments referred to above, a six-year post-trial follow-up of the LRC-CPPT patient population has been completed (a total of 13.4 years of in-trial plus post-trial follow-up) and revealed no significant difference in the incidence of cause-specific mortality or cancer morbidity between cholestyramine and placebo treated patients.

Pregnancy

Pregnancy Category C

There are no adequate and well controlled studies in pregnant women. The use of cholestyramine in pregnancy or lactation or by women of childbearing age requires that the potential benefits of drug therapy be weighed against the possible hazards to the mother and child. Cholestyramine is not absorbed systemically, however, it is known to interfere with absorption of fat-soluble vitamins; accordingly, regular prenatal supplementation may not be adequate (see **PRECAUTIONS, Drug Interactions**).

Nursing Mothers

Caution should be exercised when cholestyramine resin is administered to a nursing mother. The possible lack of proper vitamin absorption described in **PRECAUTIONS, Pregnancy** may have an effect on nursing infants.

Pediatric Use

Although an optimal dosage schedule has not been established, standard texts^(6,7) list a usual pediatric dose of 240 mg/kg/day of anhydrous cholestyramine resin in two to three divided doses, normally

page 8

cut die/perforation

text limit

bleed

adhesive

TNSI APPROVED 15

M. J. [Signature]

12-23-20

M. J. [Signature]

220 mm

70 mm

not to exceed 8 g/day with dose titration based on response and tolerance.

In calculating pediatric dosages, 83.3 mg of anhydrous cholestyramine resin are contained in 100 mg of cholestyramine for oral suspension USP, light.

The effects of long-term drug administration, as well as its effect in maintaining lowered cholesterol levels in pediatric patients, are unknown. Also, see **ADVERSE REACTIONS**.

ADVERSE REACTIONS

The most common adverse reaction is constipation. When used as a cholesterol-lowering agent predisposing factors for most complaints of constipation are high dose and increased age (more than 60 years old). Most instances of constipation are mild, transient and controlled with conventional therapy. Some patients require a temporary decrease in dosage or discontinuation of therapy.

Less Frequent Adverse Reactions - Abdominal discomfort and/or pain, flatulence, nausea, vomiting, diarrhea, enuciation, anorexia, steatorrhea, bleeding tendencies due to hypoprothrombinemia (Vitamin K deficiency) as well as Vitamin A (one case of night blindness reported) and D deficiencies, hyperchloremic acidosis in children, osteoporosis, rash and irritation of the skin, tongue and perianal area. Rare reports of intestinal obstruction, including two deaths, have been reported in pediatric patients.

Occasional calcified material has been observed in the biliary tree, including calcification of the gallbladder, in patients to whom cholestyramine resin has been given. However, this may be a manifestation of the liver disease and not drug related.

One patient experienced biliary colic on each of three occasions on which he took a cholestyramine for oral suspension product. One patient diagnosed as acute abdominal symptom complex was found to have a "pasty mass" in the transverse colon on x-ray.

Other events (not necessarily drug related) reported in patients taking cholestyramine resin include:

Gastrointestinal: GI-rectal bleeding, black stools, hemorrhoidal bleeding, bleeding from known duodenal ulcer, dysphagia, hiccups, ulcer attack, sour taste, pancreatitis, rectal pain, diverticulitis.

Laboratory Test Changes: Liver function abnormalities.

page 9

cut die/perforation

text limit

bleed

adhesive

TRACER APPROVALS:

MJW

12-23-20
MUNDOUS 12/23/20

220 mm

Hematologic: Prolonged prothrombin time, ecchymosis, anemia.
Hypersensitivity: Urticaria, asthma, wheezing, shortness of breath.
Musculoskeletal: Backache, muscle and joint pains, arthritis.
Neurologic: Headache, anxiety, vertigo, dizziness, fatigue, tinnitus, syncope, drowsiness, femoral nerve pain, paresthesia.
Eye: Uveitis.

Renal: Hematuria, dysuria, burnt odor to urine, diuresis.

Miscellaneous: Weight loss, weight gain, increased libido, swollen glands, edema, dental bleeding, dental caries, erosion of tooth enamel, tooth discoloration.

OVERDOSAGE

Overdosage of cholestyramine resin has been reported in a patient taking 150% of the maximum recommended daily dosage for a period of several weeks. No ill effects were reported. Should an overdose occur, the chief potential harm would be obstruction of the gastrointestinal tract. The location of such potential obstruction, the degree of obstruction and the presence or absence of normal gut motility would determine treatment.

DOSAGE AND ADMINISTRATION

The recommended starting adult dose for cholestyramine for oral suspension USP, light is one pouch or one level scoopful (4.8 grams of cholestyramine for oral suspension USP, light contains 4 grams of anhydrous cholestyramine resin) once or twice a day. The recommended maintenance dose for cholestyramine for oral suspension USP, light is 2 to 4 pouches or scoopfuls daily (8 to 16 grams anhydrous cholestyramine resin) divided into two doses. It is recommended that increases in dose be gradual with periodic assessment of lipid/protein levels at intervals of not less than 4 weeks. The maximum recommended daily dose is 6 pouches or scoopfuls of Cholestyramine for oral suspension USP, light (24 grams of anhydrous cholestyramine resin). The suggested time of administration is at mealtimes but may be modified to avoid interference with absorption of other medications. Although the recommended dosing schedule is twice daily, cholestyramine oral

page 10

- cut die/perforation
- - - text limit
- bleed
- adhesive

TRC-A-Paroals:

12-23-20

MW/Mills 12/23/20

220 mm

70 mm

suspension USP, light may be administered in 1 to 6 doses per day.

Cholestyramine for oral suspension USP, light should not be taken in its dry form. Always mix the dry powder with water or other fluids before ingesting. See Preparation Instructions.

Concomitant Therapy
 Preliminary evidence suggests that the lipid-lowering effects of cholestyramine on total and LDL-cholesterol are enhanced when combined with a HMG-CoA reductase inhibitor, e.g., pravastatin, lovastatin, simvastatin and fluvastatin. Additive effects on LDL-cholesterol are also seen with combined nicotinic acid/cholestyramine therapy. See **PRECAUTIONS, Drug Interactions** for recommendations on administering concomitant therapy.

Preparation
 The color of cholestyramine for oral suspension USP, light may vary somewhat from batch to batch but this variation does not affect the performance of the product. Place the contents of one single-dose pouch or one level scoopful of cholestyramine for oral suspension USP, light in a glass or cup. Add at least 2 to 6 ounces of water or other non-carbonated beverage of your choice. Stir to a uniform consistency and drink.

Cholestyramine for oral suspension USP, light may also be mixed with highly fluid soups or pulpy fruits with a high moisture content such as applesauce or crushed pineapple.

HOW SUPPLIED
 Cholestyramine for oral suspension USP, light orange flavor is available in a carton of 60 single-dose 4.8 gram pouches and in a can containing 201.6 grams. Each 4.8 gram dose of cholestyramine for oral suspension USP, light contains 4 grams of anhydrous cholestyramine resin.

NDC 51224-009-20 Carton of 60 single-dose pouches
 NDC 51224-009-10 Can, 201.6 g (containing a scoop that is not interchangeable with scoops from other products)

Storage: Store at 20°C to 25°C (68° to 77°F) [see USP Controlled Room Temperature].
 Always replace plastic lid after using.
KEEP OUT OF THE REACH OF CHILDREN.

STAT APPROVAL

[Handwritten signature]

17-23-20

MINNIS 12/23/20

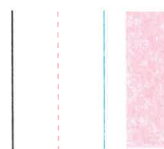
page 11

— cut die/perforation

- - - text limit

— bleed

— adhesive



220 mm

REFERENCES

1. The Lipid Research Clinics Coronary Primary Prevention Trial Results: (I) Reduction in Incidence of Coronary Heart Disease; (II) The Relationship of Reduction in Incidence of Coronary Heart Disease to Cholesterol Lowering. JAMA, 1984, 251:351-374.
2. Brensike JF, Levy RI, Kelsey SF, et al. Effects of therapy with cholestyramine on progression of coronary arteriosclerosis: results of the NHLBI type II coronary intervention study. Circulation 1984; 69:313-24.
3. Watts, GF, Lewis B, Brunt, JNH, Lewis ES, et al. Effects on coronary artery disease of lipid-lowering diet or diet plus cholestyramine, in the St. Thomas Atherosclerosis Regression Study (STARS). Lancet 1992; 339:563-69.
4. National Cholesterol Education Program. Second Report of the Expert Panel on Detection, Evaluation and Treatment of High Blood Cholesterol in Adults (Adult Treatment Panel II). Circulation 1994 Mar; 89 (3):1333-445.
5. The Lipid Research Clinics Coronary Primary Prevention Trial: Results of 6 Years of Post-Trial Follow-up. Arch Intern Med 1992; 152:1399-1410.
6. Behrman RE et al (eds): Nelson, Textbook of Pediatrics, ed 15. Philadelphia, PA, WB Saunders Company, 1996.
7. Takemoto CK et al (eds): Pediatric Dosage Handbook, ed 3. Cleveland/Akron, OH, Lexi-Comp, Inc., 1996/1997.

To report SUSPECTED ADVERSE REACTIONS, contact TAGI Pharma, Inc. at 1-844-666-3942 or FDA at 1-800-FDA-1088 or www.fda.gov/medwatch.

Manufactured by
 Laboratorios Rubió, S.A.
 Industria, 29, Pol. Ind. Comie de Sert
 08755-Castellbisbal (Barcelona)
 Spain

Manufactured for
 TAGI Pharma, Inc.
 South Beloit, IL 61080
 Rev. 11/20

page 12

cut die/perforation

text limit

bleed

adhesive

TINTEMPROBANDS:

MJL

12-23-20

MINIUS REPETA

260 mm

70 mm

Preparation:

1. A scoop is enclosed to help you measure accurately. Do not force or pack the powder into the scoop.
2. Place one level scoopful of Cholestyramine for Oral Suspension USP, Light in a glass or cup.
3. Add at least 2 to 6 ounces of water or the noncarbonated beverage of your choice.
4. Stir to a uniform consistency and drink.

Always mix Cholestyramine for Oral Suspension USP, Light with water, or the noncarbonated beverage of your choice, or other highly fluid foods or fruits before using.

NDC 51224-009-10

Contains the artificial sweetener Aspartame.

Usual Dosage: See accompanying literature.

*Each level scoopful (4.8 grams) of Cholestyramine for Oral Suspension USP, Light contains 4 grams cholestyramine resin USP.

Rx Only
Cholestyramine for Oral Suspension USP, Light Powder

4 grams cholestyramine resin USP, per scoopful*

Orange Flavor
42 Measured Doses
Contents: 201.6 g
(168 g cholestyramine resin USP)



Manufactured by Laboratorios Rubió, S.A. Industria, 29. Pol. Ind. Comte de Sert 08755-Castellbisbal (Barcelona) Spain

Manufactured for TAGI Pharma, Inc. South Beloit, IL 61080

Rev. 11/20 36840510 0120 3 51224-009-10 3



WARNINGS PHENYLKETONURICS:
CONTAINS PHENYLALANINE 16.8 mg per 4.8 g DOSE.

This package is not child-resistant.

KEEP OUT OF THE REACH OF CHILDREN.

Always replace plastic lid after using.

Store at 20°C to 25°C (68° to 77°F) [see USP Controlled Room Temperature].

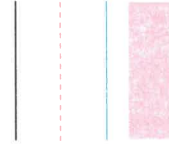
base

cut die/perforation

text limit

bleed

adhesive



THAT APPROVED

[Handwritten signature]

12-23-20

MMAKUS 12/23/20

CODIGO PRODUCTO	36126005
NOMBRE PRODUCTO	cholest USP light
VERSION	0120
Material	OFFSET
Gramaje	50 gr
Nª de Tintas	1+1
Especif. Tintas	NEGRO
Medidas Folleto	240X240
Medidas Plegado	40X120
Tipografía	Helvetica
Tamaño tipografía	tamaño: 7pt interlineado: 6pt
DATAMATRIX	(02)00000361260051(99)0120

Elaborado por	Verificado por:	Aprobado por:	Aprobado por:
Ainoa	IBERICA GRAFICA	IBERICA GRAFICA	RUBIO
FECHA 19/11/20	FECHA 19/11/20	Fecha	Fecha

40 mm
PORTADA

Cholestyramine for Oral Suspension Rx only

Cholestyramine USP, light, the chloride salt of a basic resin, is intended for oral administration. Cholestyramine resin is not absorbed from the digestive tract. Each 4.8 gram USP, light contains 4 grams of cholestyramine resin. It is represented by the following chemical structure:

Representation of structure of main polymer:
 Cholestyramine resin is a polystyrene resin cross-linked with divinylbenzene. The resin is a copolymer of styrene, divinylbenzene, and methyl methacrylate. The resin is a yellow to orange, amorphous, colloidal silicon dioxide gel with a water content of 10% and a pH of 7.0 to 8.0. The resin is a precursor of bile acids. During normal digestion, bile acids are absorbed from the intestine. Only very small amounts of bile acids are found in the feces. Cholestyramine resin adsorbs and combines with the bile acids in the intestine in a partial removal of bile acids from the circulation. The increased fecal loss of bile acids due to cholestyramine resin administration results in a decrease in cholesterol synthesis in the liver. In patients with partial biliary obstruction, the reduction of serum bile acid levels may be beneficial.

Inert ingredients: aspartame, citric acid, anhydrous colloidal silicon dioxide, natural orange flavor, D&C yellow No. 10 aluminum lake and FD&C yellow No. 6 aluminum lake.

CLINICAL PHARMACOLOGY
 Cholesterol is probably the sole substrate for bile acid synthesis in the liver. A major portion of the cholesterol is converted to bile acids in the enterohepatic circulation. Only very small amounts of bile acids are found in the feces. Cholestyramine resin adsorbs and combines with the bile acids in the intestine in a partial removal of bile acids from the circulation. The increased fecal loss of bile acids due to cholestyramine resin administration results in a decrease in cholesterol synthesis in the liver. In patients with partial biliary obstruction, the reduction of serum bile acid levels may be beneficial.

40 mm
CONTRAPORTADA

120 mm

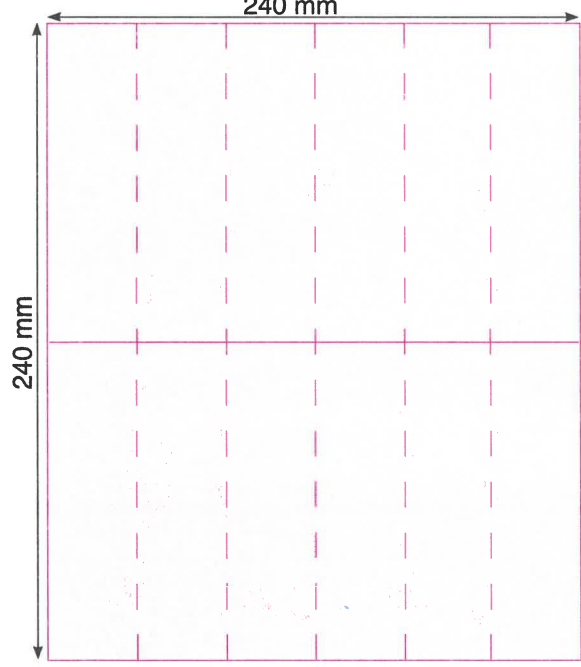
Desarrollo Interno

Plegado en Cruz 40X120

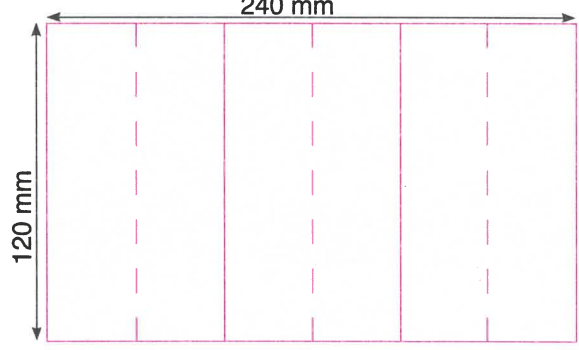
- Líneas de plegado
- Línea del siguiente plegado

PROSPECTO SIN PLEGAR

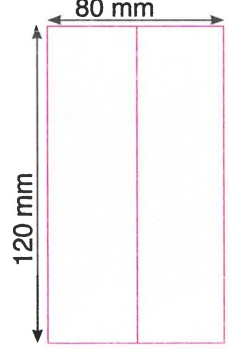
1. DÍPTICO



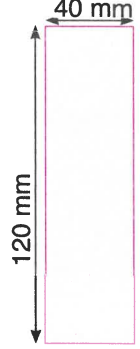
2. ZETA



3. DÍPTICO



4. ACABADO FINAL



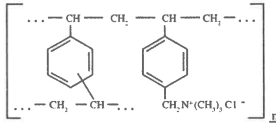
TRGZ Approvals:
 M. M. M. 11/24/2020
 K. B. 11/24/2020



Cholestyramine for Oral Suspension USP, Light Rx only

DESCRIPTION

Cholestyramine for oral suspension USP, light, the chloride salt of a basic anion exchange resin, a cholesterol-lowering agent, is intended for oral administration. Cholestyramine resin is quite hydrophilic, but insoluble in water. Cholestyramine resin is not absorbed from the digestive tract. Each 4.8 grams of cholestyramine for oral suspension USP, light contain 4 grams of cholestyramine resin. It is represented by the following structural formula:



Representation of structure of main polymeric groups

Inactive Ingredients: aspartame, citric acid anhydrous, colloidal silicon dioxide, propylene glycol alginate, xanthan gum, natural orange flavor, D&C yellow No. 10 aluminum lake and FD&C yellow No. 6 aluminum lake.

CLINICAL PHARMACOLOGY

Cholesterol is probably the sole precursor of bile acids. During normal digestion, bile acids are secreted into the intestines. A major portion of the bile acids is absorbed from the intestinal tract and returned to the liver via the enterohepatic circulation. Only very small amounts of bile acids are found in normal serum.

Cholestyramine resin adsorbs and combines with the bile acids in the intestine to form an insoluble complex which is excreted in the feces. This results in a partial removal of bile acids from the enterohepatic circulation by preventing their absorption.

The increased fecal loss of bile acids due to cholestyramine resin administration leads to an increased oxidation of cholesterol to bile acids, a decrease in beta lipoprotein or low density lipoprotein plasma levels and a decrease in serum cholesterol levels. Although in man, cholestyramine resin produces an increase in hepatic synthesis of cholesterol, plasma cholesterol levels fall.

In patients with partial biliary obstruction, the reduction of serum bile acid levels by cholestyramine resin reduces excess bile acids deposited in the dermal tissue with resultant decrease in pruritus.

Clinical Studies

In a large, placebo-controlled, multi-clinic study, LRC-CPPT¹, hypercholesterolemic subjects treated with cholestyramine resin had mean reductions in total and low-density lipoprotein cholesterol (LDL-C) which exceeded those for diet and placebo treatment by 7.2% and 10.4%, respectively. Over the seven-year study period the cholestyramine resin group experienced a 19% reduction (relative to the incidence in the placebo group) in the combined rate of coronary heart disease death plus non-fatal myocardial infarction (cumulative incidences of 7% cholestyramine resin and 8.6% placebo). The subjects included in the study were men aged 35 to 59 with serum cholesterol levels above 265 mg/dL and no previous history of heart disease. It is not clear to what extent these findings can be extrapolated to females and other segments of the hypercholesterolemic population. (See also **PRECAUTIONS, Carcinogenesis, Mutagenesis, Impairment of Fertility**).

Two controlled clinical trials have examined the effects of cholestyramine monotherapy upon coronary atherosclerotic lesions using coronary arteriography. In the NHLBI Type II Coronary Intervention Trial², 116 patients (80% male) with coronary artery disease (CAD) documented by arteriography were randomized to cholestyramine resin or placebo for five years of treatment. Final study arteriography revealed progression of coronary artery disease in 49% of placebo patients compared to 32% of the cholestyramine resin group (p<0.05).

In the St. Thomas Atherosclerosis Regression Study (STARS)³, 90 hypercholesterolemic men with CAD were randomized to three blinded treatments: usual care, lipid-lowering diet and lipid-lowering diet plus cholestyramine resin. After 36 months, follow-up coronary arteriography revealed progression of disease in 46% of usual care patients, 15% of patients on lipid-lowering diet and 12% of those receiving diet plus cholestyramine resin (p<0.02). The mean absolute width of coronary segments decreased in the usual care group, increased slightly (0.003 mm) in the diet group and increased by 0.103 mm in the diet plus cholestyramine group (p<0.05). Thus in these randomized controlled clinical trials using coronary arteriography, cholestyramine resin monotherapy has been demonstrated to slow progression^{2,3} and promote regression³ of atherosclerotic lesions in the coronary arteries of patients with coronary artery disease.

The effect of intensive lipid-lowering therapy on coronary atherosclerosis has been assessed by arteriography in hyperlipidemic patients. In these randomized, controlled clinical trials, patients were treated for two to four years by either conventional methods (diet, placebo or in some cases low dose resin) or intensive combination therapy using diet plus colestipol (an anion exchange resin with a mechanism of action and an effect similar on serum lipids to that of cholestyramine for oral suspension USP, light) plus either nicotinic acid or lovastatin. When compared to conventional measures, intensive lipid-lowering combination therapy significantly reduced the frequency of progression and increased the frequency of regression of coronary atherosclerotic lesions in patients with or at risk for coronary artery disease.

INDICATIONS AND USAGE

1) Cholestyramine for oral suspension USP, light is indicated as adjunctive therapy to diet for the reduction of elevated serum cholesterol in patients with primary hypercholesterolemia (elevated low density lipoprotein [LDL] cholesterol) who do not respond adequately to diet. Cholestyramine for oral suspension USP, light may be useful to lower LDL cholesterol in patients who also have hypertriglyceridemia, but it is not indicated where hypertriglyceridemia is the abnormality of most concern.

Therapy with lipid-altering agents should be a component of multiple risk factor intervention in those individuals at significantly increased risk for atherosclerotic vascular disease due to hypercholesterolemia. Treatment should begin and continue with dietary therapy specific for the type of hyperlipoproteinemia determined prior to initiation of drug therapy. Excess body weight may be an important factor and caloric restriction for weight normalization should be addressed prior to drug therapy in the overweight.

Prior to initiating therapy with cholestyramine resin, secondary causes of hypercholesterolemia (e.g., poorly controlled diabetes mellitus, hypothyroidism, nephrotic syndrome, dysproteinemias, obstructive liver disease, other drug therapy, alcoholism), should be excluded and a lipid profile performed to assess Total cholesterol, HDL-C and triglycerides (TG). For individuals with TG less than 400 mg/dL (<4.5 mmol/L), LDL-C can be estimated using the following equation: LDL-C = Total cholesterol - [(TG/5) + HDL-C]

For TG levels > 400 mg/dL, this equation is less accurate and LDL-C concentrations should be determined by ultracentrifugation. In hypertriglyceridemic patients, LDL-C may be low or normal despite elevated Total-C. In such cases cholestyramine resin may not be indicated.

Serum cholesterol and triglyceride levels should be determined periodically based on NCEP guidelines to confirm initial and adequate long-term response. A favorable trend in cholesterol reduction should occur during the first month of cholestyramine resin therapy. The therapy should be continued to sustain cholesterol reduction. If adequate cholesterol reduction is not attained, increasing the dosage of cholestyramine resin or adding other lipid-lowering agents in combination with cholestyramine resin should be considered.

Since the goal of treatment is to lower LDL-C, the NCEP⁴ recommends that LDL-C levels be used to initiate and assess treatment response. If LDL-C levels are not available then Total-C alone may be used to monitor long-term therapy. A lipoprotein analysis (including LDL-C determination) should be carried out once a year. The NCEP treatment guidelines are summarized below.

Definite Atherosclerotic Disease*	Two or More Other Risk Factors†	LDL-Cholesterol mg/dL (mmol/L)	
		Initiation Level	Goal
No	No	≥190 (≥4.9)	<160 (<4.1)
No	Yes	≥160 (≥4.1)	<130 (<3.4)
Yes	Yes or No	≥130 (≥3.4)	<100 (<2.6)

* Coronary heart disease or peripheral vascular disease (including symptomatic carotid artery disease).

† Other risk factors for coronary heart disease (CHD) include: age (males ≥45 years; females ≥55 years or premature menopause without estrogen replacement therapy); family history of premature CHD; current cigarette smoking; hypertension; confirmed HDL-C <35 mg/dL (<0.91 mmol/L); and diabetes mellitus. Subtract one risk factor if HDL-C is ≥60 mg/dL (≥1.6 mmol/L).

Cholestyramine resin monotherapy has been demonstrated to retard the rate of progression^{2,3} and increase the rate of regression³ of coronary atherosclerosis.

2) Cholestyramine for oral suspension USP, light is indicated for the relief of pruritus associated with partial biliary obstruction. Cholestyramine resin has been shown to have a variable effect on serum cholesterol in these patients. Patients with primary biliary cirrhosis may exhibit an elevated cholesterol as part of their disease.

CONTRAINDICATIONS

Cholestyramine for oral suspension USP, light is contraindicated in patients with complete biliary obstruction where bile is not secreted into the intestine and in those individuals who have shown hypersensitivity to any of its components.

WARNINGS

PHENYLKETONURICS: CHOLESTYRAMINE FOR ORAL SUSPENSION USP, LIGHT CONTAINS 16.8 mg PHENYLALANINE PER 4.8 GRAM DOSE.

PRECAUTIONS

General

Chronic use of cholestyramine resin may be associated with increased bleeding tendency due to hypoprothrombinemia associated with Vitamin K deficiency. This will usually respond promptly to parenteral Vitamin K, and recurrences can be prevented by oral administration of Vitamin K. Reduction of serum or red cell folate has been reported over long term administration of cholestyramine resin. Supplementation with folic acid should be considered in these cases.

There is a possibility that prolonged use of cholestyramine resin, since it is a chloride form of anion exchange resin, may produce hyperchloremic acidosis. This would especially be true in younger and smaller patients where the relative dosage may be higher. Caution should also be exercised in patients with renal insufficiency or volume depletion and in patients receiving concomitant spironolactone.

Cholestyramine resin may produce or worsen preexisting constipation. The dosage should be increased gradually in patients to minimize the risk of developing fecal impaction. In patients with preexisting constipation, the starting dose should be 1 pouch or 1 scoop once daily for 5 to 7 days, increasing to twice daily with monitoring of constipation and of serum lipoproteins, at least twice, 4 to 6 weeks apart. Increased fluid intake and fiber intake should be encouraged to alleviate constipation and a stool softener may occasionally be indicated. If the initial dose is well tolerated, the dose may be increased as needed by one dose/day (at monthly intervals) with periodic monitoring of serum lipoproteins. If constipation worsens or the desired therapeutic response is not achieved at one to six doses/day, combination therapy or alternate therapy should be considered. Particular effort should be made to avoid constipation in patients with symptomatic coronary artery disease. Constipation associated with cholestyramine resin may aggravate hemorrhoids.

Information for Patients

Inform your physician if you are pregnant or plan to become pregnant or are breast-feeding. Drink plenty of fluids and mix each 4.8 gram dose of cholestyramine for oral suspension USP, light in at least 2 to 6 ounces of fluid before taking. Sipping or holding the resin suspension in the mouth for prolonged periods may lead to changes in the surface of the teeth resulting in discoloration, erosion of enamel or decay; good oral hygiene should be maintained.

Laboratory Tests

Serum cholesterol levels should be determined frequently during the first few months of therapy and periodically thereafter. Serum triglyceride levels should be measured periodically to detect whether significant changes have

*TRG Approval:
MWH/MS 1/24/20
BFB 4/24/2020*

occurred.

The LRC-CPPT showed a dose-related increase in serum triglycerides of 10.7% to 17.1% in the cholestyramine-treated group, compared with an increase of 7.9% to 11.7% in the placebo group. Based on the mean values and adjusting for the placebo group, the cholestyramine-treated group showed an increase of 5% over pre-entry levels the first year of the study and an increase of 4.3% the seventh year.

Drug Interactions

Cholestyramine resin may delay or reduce the absorption of concomitant oral medication such as phenylbutazone, warfarin, thiazide diuretics (acidic) or propranolol (basic), as well as tetracycline, penicillin G, phenobarbital, thyroid and thyroxine preparations, estrogens and progestins and digitalis. Interference with the absorption of oral phosphate supplements has been observed with another positively-charged bile acid sequestrant. Cholestyramine resin may interfere with the pharmacokinetics of drugs that undergo enterohepatic circulation. The discontinuance of cholestyramine resin could pose a hazard to health if a potentially toxic drug such as digitalis has been titrated to a maintenance level while the patient was taking cholestyramine resin.

Because cholestyramine binds bile acids, cholestyramine resin may interfere with normal fat digestion and absorption and thus may prevent absorption of fat-soluble vitamins such as A, D, E and K. When cholestyramine resin is given for long periods of time, concomitant supplementation with water-miscible (or parenteral) forms of fat soluble vitamins should be considered.

SINCE CHOLESTYRAMINE RESIN MAY BIND OTHER DRUGS GIVEN CONCURRENTLY, IT IS RECOMMENDED THAT PATIENTS TAKE OTHER DRUGS AT LEAST 1 HOUR BEFORE OR 4 TO 6 HOURS AFTER CHOLESTYRAMINE RESIN (OR AT AS GREAT AN INTERVAL AS POSSIBLE) TO AVOID IMPEDING THEIR ABSORPTION.

Carcinogenesis, Mutagenesis, Impairment of Fertility

In studies conducted in rats in which cholestyramine resin was used as a tool to investigate the role of various intestinal factors, such as fat, bile salts and microbial flora, in the development of intestinal tumors induced by potent carcinogens, the incidence of such tumors was observed to be greater in cholestyramine resin-treated rats than in control rats.

The relevance of this laboratory observation from studies in rats to the clinical use of cholestyramine resin is not known. In the LRC-CPPT study referred to above, the total incidence of fatal and nonfatal neoplasms was similar in both treatment groups. When the many different categories of tumors are examined, various alimentary system cancers were somewhat more prevalent in the cholestyramine group. The small numbers and the multiple categories prevent conclusions from being drawn. However, in view of the fact that cholestyramine resin is confined to the GI tract and not absorbed and in light of the animal experiments referred to above, a six-year post-trial follow-up of the LRC-CPPT patient population has been completed (a total of 13.4 years of in-trial plus post-trial follow-up) and revealed no significant difference in the incidence of cause-specific mortality or cancer morbidity between cholestyramine and placebo treated patients.

Pregnancy

Pregnancy Category C

There are no adequate and well controlled studies in pregnant women. The use of cholestyramine in pregnancy or lactation or by women of childbearing age requires that the potential benefits of drug therapy be weighed against the possible hazards to the mother and child. Cholestyramine is not absorbed systemically, however, it is known to interfere with absorption of fat-soluble vitamins; accordingly, regular prenatal supplementation may not be adequate (see PRECAUTIONS, Drug Interactions).

Nursing Mothers

Caution should be exercised when cholestyramine resin is administered to a nursing mother. The possible lack of proper vitamin absorption described in PRECAUTIONS, Pregnancy may have an effect on nursing infants.

Pediatric Use

Although an optimal dosage schedule has not been established, standard texts^{6,7} list a usual pediatric dose of 240 mg/kg/day of anhydrous cholestyramine resin in two to three divided doses, normally not to exceed 8 g/day with dose titration based on response and tolerance.

In calculating pediatric dosages, 83.3 mg of anhydrous cholestyramine resin are contained in 100 mg of cholestyramine for oral suspension USP, light.

The effects of long-term drug administration, as well as its effect in maintaining lowered cholesterol levels in pediatric patients, are unknown. Also, see ADVERSE REACTIONS.

ADVERSE REACTIONS

The most common adverse reaction is constipation. When used as a cholesterol-lowering agent predisposing factors for most complaints of constipation are high dose and increased age (more than 60 years old). Most instances of constipation are mild, transient and controlled with conventional therapy. Some patients require a temporary decrease in dosage or discontinuation of therapy.

Less Frequent Adverse Reactions - Abdominal discomfort and/or pain, flatulence, nausea, vomiting, diarrhea, eructation, anorexia, steatorrhea, bleeding tendencies due to hypoprothrombinemia (Vitamin K deficiency) as well as Vitamin A (one case of night blindness reported) and D deficiencies, hyperchloremic acidosis in children, osteoporosis, rash and irritation of the skin, tongue and perianal area. Rare reports of intestinal obstruction, including two deaths, have been reported in pediatric patients.

Occasional calcified material has been observed in the biliary tree, including calcification of the gallbladder, in patients to whom cholestyramine resin has been given. However, this may be a manifestation of the liver disease and not drug related.

One patient experienced biliary colic on each of three occasions on which he took a cholestyramine for oral suspension product. One patient diagnosed as acute abdominal symptom complex was found to have a "pasty mass" in the transverse colon on x-ray.

Other events (not necessarily drug related) reported in patients taking cholestyramine resin include:

Gastrointestinal: GI-rectal bleeding, black stools, hemorrhoidal bleeding, bleeding from known duodenal ulcer, dysphagia, hiccups, ulcer attack, sour taste, pancreatitis, rectal pain, diverticulitis.

Laboratory Test Changes: Liver function abnormalities.

Hematologic: Prolonged prothrombin time, ecchymosis, anemia.

Hypersensitivity: Urticaria, asthma, wheezing, shortness of breath.

Musculoskeletal: Backache, muscle and joint pains, arthritis.

Neurologic: Headache, anxiety, vertigo, dizziness, fatigue, tinnitus, syncope, drowsiness, femoral nerve pain, paresthesia.

Eye: Uveitis.

Renal: Hematuria, dysuria, burnt odor to urine, diuresis.

Miscellaneous: Weight loss, weight gain, increased libido, swollen glands, edema, dental bleeding, dental caries, erosion of tooth enamel, tooth discoloration.

OVERDOSAGE

Overdosage of cholestyramine resin has been reported in a patient taking 150% of the maximum recommended daily dosage for a period of several weeks. No ill effects were reported. Should an overdosage occur, the chief potential harm would be obstruction of the gastrointestinal tract. The location of such potential obstruction, the degree of obstruction and the presence or absence of normal gut motility would determine treatment.

DOSAGE AND ADMINISTRATION

The recommended starting adult dose for cholestyramine for oral suspension USP, light is one pouch or one level scoopful (4.8 grams of cholestyramine for oral suspension USP, light contains 4 grams of anhydrous cholestyramine resin) once or twice a day. The recommended maintenance dose for cholestyramine for oral suspension USP, light is 2 to 4 pouches or scoopfuls daily (8 to 16 grams anhydrous cholestyramine resin) divided into two doses. It is recommended that increases in dose be gradual with periodic assessment of lipid/apoprotein levels at intervals of not less than 4 weeks. The maximum recommended daily dose is 6 pouches or scoopfuls of cholestyramine for oral suspension USP, light (24 grams of anhydrous cholestyramine resin). The suggested time of administration is at mealtime but may be modified to avoid interference with absorption of other medications. Although the recommended dosing schedule is twice daily, cholestyramine for oral suspension USP, light may be administered in 1 to 6 doses per day.

Cholestyramine for oral suspension USP, light should not be taken in its dry form. Always mix the dry powder with water or other fluids before ingesting. See Preparation Instructions.

Concomitant Therapy

Preliminary evidence suggests that the lipid-lowering effects of cholestyramine on total and LDL-cholesterol are enhanced when combined with a HMG-CoA reductase inhibitor, e.g., pravastatin, lovastatin, simvastatin and fluvastatin. Additive effects on LDL-cholesterol are also seen with combined nicotinic acid/cholestyramine therapy. See the PRECAUTIONS, Drug Interactions for recommendations on administering concomitant therapy.

Preparation

The color of cholestyramine for oral suspension USP, light may vary somewhat from batch to batch but this variation does not affect the performance of the product. Place the contents of one single-dose pouch or one level scoopful of cholestyramine for oral suspension USP, light in a glass or cup. Add at least 2 to 6 ounces of water or other non-carbonated beverage of your choice. Stir to uniform consistency and drink.

Cholestyramine for oral suspension USP, light may also be mixed with highly fluid soups or pulpy fruits with a high moisture content such as applesauce or crushed pineapple.

HOW SUPPLIED

Cholestyramine for oral suspension USP, light orange flavor is available in a carton of 60 single-dose 4.8 gram pouches and in a can containing 201.6 grams. Each 4.8 gram dose of cholestyramine for oral suspension USP, light contains 4 grams of anhydrous cholestyramine resin.

NDC 51224-009-20 Carton of 60 single-dose pouches

NDC 51224-009-10 Can, 201.6 g (containing a scoop that is not interchangeable with scoops from other products)

Storage: Store at 20°C to 25°C (68° to 77°F) [see USP Controlled Room Temperature].

Always replace plastic lid after using.

KEEP OUT OF THE REACH OF CHILDREN.

REFERENCES

1. The Lipid Research Clinics Coronary Primary Prevention Trial Results: (I) Reduction in Incidence of Coronary Heart Disease; (II) The Relationship of Reduction in Incidence of Coronary Heart Disease to Cholesterol Lowering. JAMA. 1984; 251:351-374.
2. Brensike JF, Levy RI, Kelsey SF, et al. Effects of therapy with cholestyramine on progression of coronary arteriosclerosis: results of the NHLBI type II coronary intervention study. Circulation 1984; 69:313-24.
3. Watts, GF, Lewis B, Brunt JNH, Lewis ES, et al. Effects on coronary artery disease of lipid-lowering diet or diet plus cholestyramine, in the St. Thomas Atherosclerosis Regression Study (STARS). Lancet 1992; 339:563-69.
4. National Cholesterol Education Program. Second Report of the Expert panel on Detection, Evaluation and Treatment of High Blood Cholesterol in Adults (Adult Treatment Panel II). Circulation 1994 Mar; 89 (3):1333-445.
5. The Lipid Research Clinics Investigators. The Lipid Research Clinics Coronary Primary Prevention Trial Results of 6 Years of Post-Trial Follow-up. Arch Intern Med 1992; 152:1399-1410.
6. Behrman RE et al (eds): Nelson, *Textbook of Pediatrics*, ed 15. Philadelphia, PA, WB Saunders Company, 1996.
7. Takemoto CK et al (eds): *Pediatric Dosage Handbook*, ed 3. Cleveland/Akron, OH, Lexi-Comp, Inc., 1996/1997.


To report SUSPECTED ADVERSE REACTIONS, contact TAGI Pharma, Inc. at 1-855-225-8244 or FDA at 1-800-FDA-1088 or www.fda.gov/medwatch.

Manufactured for
TAGI Pharma, Inc.
South Beloit, IL 61080


Manufactured by
Laboratorios Rubió, S.A.
Industria, 29, Pol. Ind. Comte de Sert
08755-Castellbisbal (Barcelona) Spain
36126005 0120
Rev. 11/20

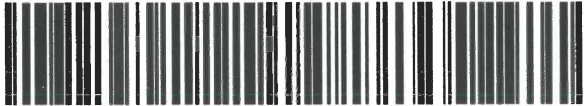
TA 6E Approvals:
MMAH 5/12/12
KBP
4/27/12

Cholestyramine for Oral Suspension USP, Light Can 42 doses. NDC 51224-009-10.


 TAGI PHARMA, INC.
NDC 51224-009-10
Cholestyramine for Oral Suspension USP, Light
Can 42 doses
Store at 20°C to 25°C (68° to 77°F)
(see USP Controlled Room Temperature)

EXP: 03/31/2024 LOT: 000000X QTY: 006



(17)240331(10)000000X(30)6



(01)50351224009108(21)123456789123

Cholestyramine for Oral Suspension USP, Light 60 pouches. NDC 51224-009-20.


 TAGI PHARMA, INC.
NDC 51224-009-20
Cholestyramine for Oral Suspension USP, Light
60 Pouches
Store at 20°C to 25°C (68° to 77°F)
(see USP Controlled Room Temperature)

EXP: 03/31/2024 LOT: 000000X QTY: 006


(17)240331(10)000000X(30)6


(01)50351224009207(21)123456789123

Approval Tagi:




Date:

30 APR 2021 3 May 2021

Approval Rubió:

Date:

Cholestyramine for Oral Suspension USP, Light Can 42 doses. NDC 51224-009-10.

TAGI PHARMA, INC.	PARTIAL	
NDC 51224-009-10		
Cholestyramine for Oral Suspension USP, Light		
Can 42 doses		
Store at 20°C to 25°C (68° to 77°F) (see USP Controlled Room Temperature)		
EXP: 03/31/2024	LOT: 000000X	QTY: 002
		
(00)503512240000320111		

Cholestyramine for Oral Suspension USP, Light 60 pouches. NDC 51224-009-20.

TAGI PHARMA, INC.	PARTIAL	
NDC 51224-009-20		
Cholestyramine for Oral Suspension USP, Light		
60 Pouches		
Store at 20°C to 25°C (68° to 77°F) (see USP Controlled Room Temperature)		
EXP: 03/31/2024	LOT: 000000X	QTY: 002
		
(00)503512240000320111		

Approval Tagi:





Date:

30 APR 2021 3 May 2021


Approval Rubió:

Date:

Cholestyramine for Oral Suspension USP, Light Can 42 doses. NDC 51224-009-10.

FROM LAB. RUBIO S.A. C/INDUSTRIA, 29 CASTELLBISBAL, 08735	TO: TAGI Pharma, Inc. 722 Progressive Lane Room 205 South Beloit, IL 61080
SHIP TO POSTAL CODE: (420)61080 	L RUBIO
NDC 51224-009-10	LOT 000000X
Store at 20°C to 25°C (68° to 77°F) (see USP Controlled Room Temperature)	
SSCC (00)803512240000394281 	

Cholestyramine for Oral Suspension USP, Light 60 pouches. NDC 51224-009-20.

FROM LAB. RUBIO S.A. C/INDUSTRIA, 29 CASTELLBISBAL, 08735	TO: TAGI Pharma, Inc. 722 Progressive Lane Room 205 South Beloit, IL 61080
SHIP TO POSTAL CODE: (420)61080 	L RUBIO
NDC 51224-009-20	LOT 000000X
Store at 20°C to 25°C (68° to 77°F) (see USP Controlled Room Temperature)	
SSCC (00)803512240000394281 	

Approval Tagi:



Date:

30 APR 2021 3 May 2021

Approval Rubió:

Date: